

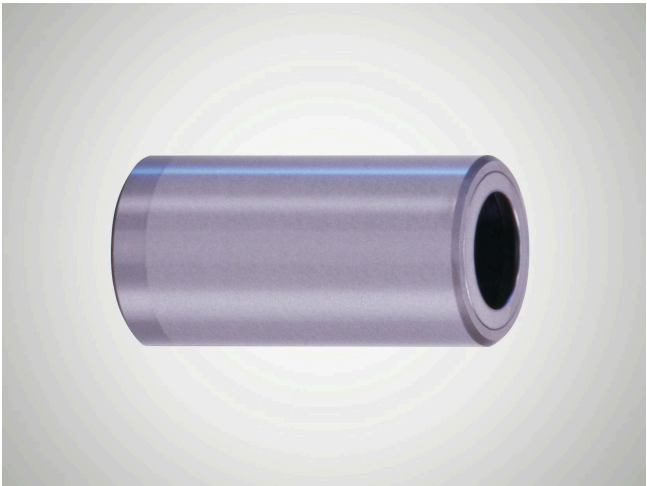
# 产品信息

## Closed Guide Bush N552

### 合适性

- Design as for N 550, with stop rings fixed on both sides for use with Mini Range ball cage N 502.
- # Minimal installation space when used with Mini Range ball cages N 502.
- # When used in combination with shaft diameter  $d_w$  ISO-h3, preloading of the rotary stroke bearing is guaranteed.
- # The stop rings ensure the cage is effectively restricted for linear and rotary movements.
- # Smooth running of the rotary stroke bearing is not impaired by the stop rings.

物品号: 5003022



### 特征

- # Stop rings fixed on both sides.
- # The closed guide bush and integrated ball cage form a separate component.
- # Guide bore diameter  $d_1$  is finely honed to ISO tolerance IT 3,  $R_z$  0.5 # 1.5  $\mu m$  depending on diameter.
- # Roundness within 1/3 ISO-IT 3.
- # Cylindricity within IT 1.
- # Radial run-out of a shaft inserted under preloading is within 0.0005 mm.
- # Outside diameter  $d_B$  n4 with radial run-out error within IT 4, ground to guide bore diameter  $d_1$ , lead-in taper on one side.
- # The maximum stroke path  $H_{max}$  is determined from the length of guide bush  $l_3$  and the length of the ball cage  $l_2$ :  $H_{max} = 2 (l_3 - l_2)$ .
- # See catalog page 37-41 for instructions on installation and servicing.

### 技术数据

材料	钢
材料编号	1.3505 (AISI E52 100)
热处理	通过硬化
恒定工作温度	150

### 尺寸

轴直径 ( $d_w$ )- 迷你	3
导套内径 ( $d_1$ )	5
导套长度 ( $l_1/L$ )	12.5
导套内尺寸 ( $l_3$ )	11
导套外径 ( $d_B$ )	7
外径公差	n4

