

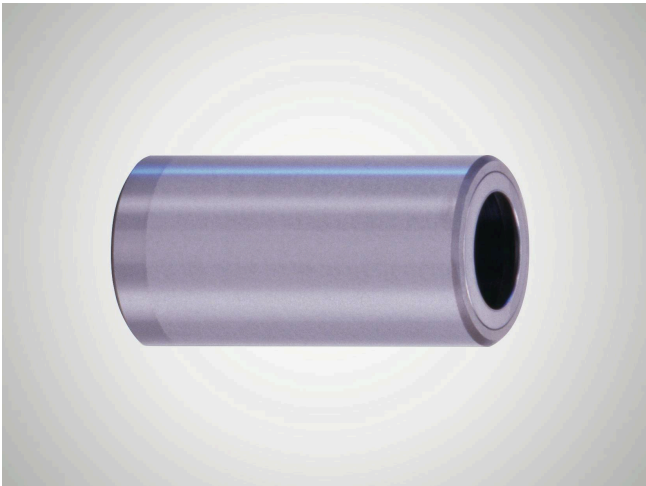
产品信息

Closed Guide Bush N552

合适性

- Design as for N 550, with stop rings fixed on both sides for use with Mini Range ball cage N 502.
- # Minimal installation space when used with Mini Range ball cages N 502.
- # When used in combination with shaft diameter d_w ISO-h3, preloading of the rotary stroke bearing is guaranteed.
- # The stop rings ensure the cage is effectively restricted for linear and rotary movements.
- # Smooth running of the rotary stroke bearing is not impaired by the stop rings.

物品号: 5003032



特征

- # Stop rings fixed on both sides.
- # The closed guide bush and integrated ball cage form a separate component.
- # Guide bore diameter d_1 is finely honed to ISO tolerance IT 3, R_z 0.5 # 1.5 μm depending on diameter.
- # Roundness within 1/3 ISO-IT 3.
- # Cylindricity within IT 1.
- # Radial run-out of a shaft inserted under preloading is within 0.0005 mm.
- # Outside diameter d_B n4 with radial run-out error within IT 4, ground to guide bore diameter d_1 , lead-in taper on one side.
- # The maximum stroke path H_{max} is determined from the length of guide bush l_3 and the length of the ball cage l_2 : $H_{max} = 2 (l_3 - l_2)$.
- # See catalog page 37-41 for instructions on installation and servicing.

技术数据

材料	钢
材料编号	1.3505 (AISI E52 100)
热处理	通过硬化
恒定工作温度	150

尺寸

轴直径 (d_w)- 迷你	6
导套内径 (d_1)	8
导套长度 (l_1/L)	20
导套内尺寸 (l_3)	18
导套外径 (d_B)	11
外径公差	n4

