

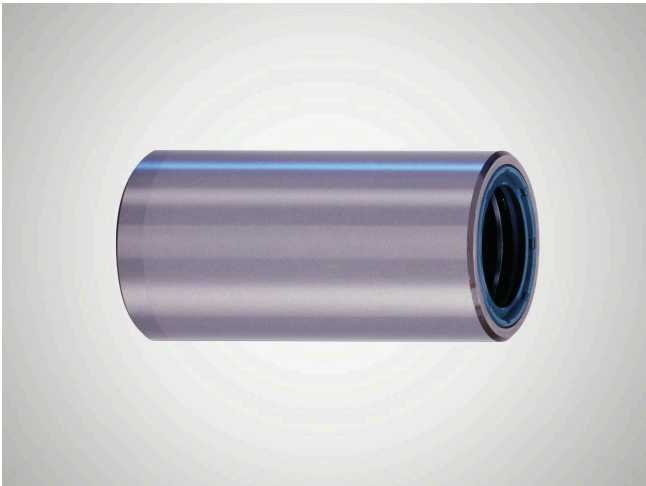
# 产品信息

## Closed Guide Bush N553

### 合适性

- Design as for N 550, with sealing and stop rings fixed on both sides.
- # When used in combination with shaft diameter  $d_w$  ISO-h3, preloading of the rotary stroke bearing is guaranteed.
- # Guide bush N 553 is designed for use in dirty environments.
- # The sealing rings prevent any dirt particles from penetrating. (The rubbing action of the sealing rings on the shaft affects the smooth running of the rotary stroke bearing slightly.)
- # Secure path limitation for the ball cage is ensured.

物品号: 5009108



### 特征

- # Sealing and stop rings fixed on both sides.
- # The closed guide bush and integrated ball cage form a separate component. Guide bore diameter  $d_1$  is finely honed to ISO tolerance IT 3, Rz 0.5 # 1.5  $\mu$ m depending on diameter.
- # Roundness within 1/3 ISO-IT 3.
- # Cylindricity within IT 1.
- # Radial run-out of a shaft inserted under preloading is within 0.0005 mm.
- # Outside diameter  $d_B$  n4 with radial run-out error within IT 4, ground to guide bore diameter  $d_1$ , lead-in taper on one side.
- # The maximum stroke path  $H_{max}$  of the rotary stroke bearing is determined from the length of guide bush  $l_3$  and the length of the ball cage  $l_2$ :  $H_{max} = 2 (l_3 - l_2)$ .
- # See catalog page 37-41 for instructions on installation and servicing.

### 技术数据

|        |                       |
|--------|-----------------------|
| 材料     | 钢                     |
| 材料编号   | 1.3505 (AISI E52 100) |
| 热处理    | 通过硬化                  |
| 恒定工作温度 | 100                   |

### 尺寸

|                    |     |
|--------------------|-----|
| 轴直径 ( $d_w$ )      | 25  |
| 导套内径 ( $d_1$ )     | 31  |
| 含密封在内的导套长度 ( $L$ ) | 139 |
| 导套长度 ( $l_1/L$ )   | 139 |
| 导套内尺寸 ( $l_3$ )    | 125 |
| 导套外径 ( $d_B$ )     | 38  |
| 外径公差               | n4  |

