

产品信息

Closed Guide Bush N553

合适性

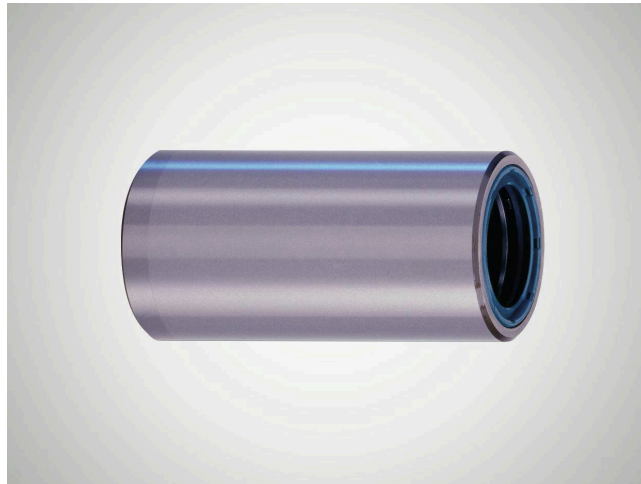
Design as for N 550, with sealing and stop rings fixed on both sides.

When used in combination with shaft diameter dw ISO-h3, preloading of the rotary stroke bearing is guaranteed.

Guide bush N 553 is designed for use in dirty environments.

The sealing rings prevent any dirt particles from penetrating. (The rubbing action of the sealing rings on the shaft affects the smooth running of the rotary stroke bearing slightly.)

Secure path limitation for the ball cage is ensured.



物品号: 5009116

特征

Sealing and stop rings fixed on both sides.

The closed guide bush and integrated ball cage form a separate component. Guide bore diameter d1 is finely honed to ISO tolerance IT 3, Rz 0.5 # 1.5 μm depending on diameter.

Roundness within 1/3 ISO-IT 3.

Cylindricity within IT 1.

Radial run-out of a shaft inserted under preloading is within 0.0005 mm.

Outside diameter dB n4 with radial run-out error within IT 4, ground to guide bore diameter d1, lead-in taper on one side.

The maximum stroke path H_{\max} of the rotary stroke bearing is determined from the length of guide bush I3 and the length of the ball cage I2: $H_{\max} = 2(I3 - I2)$.

See catalog page 37-41 for instructions on installation and servicing.

技术数据

材料	钢
材料编号	1.3505 (AISI E52 100)
热处理	通过硬化
恒定工作温度	100

尺寸

轴直径 (dw)	40
导套内径 (d1)	48
含密封在内的导套长度 (L)	86
导套长度 (l1/L)	86
导套内尺寸 (l3)	70
导套外径 (dB)	60
外径公差	n4

